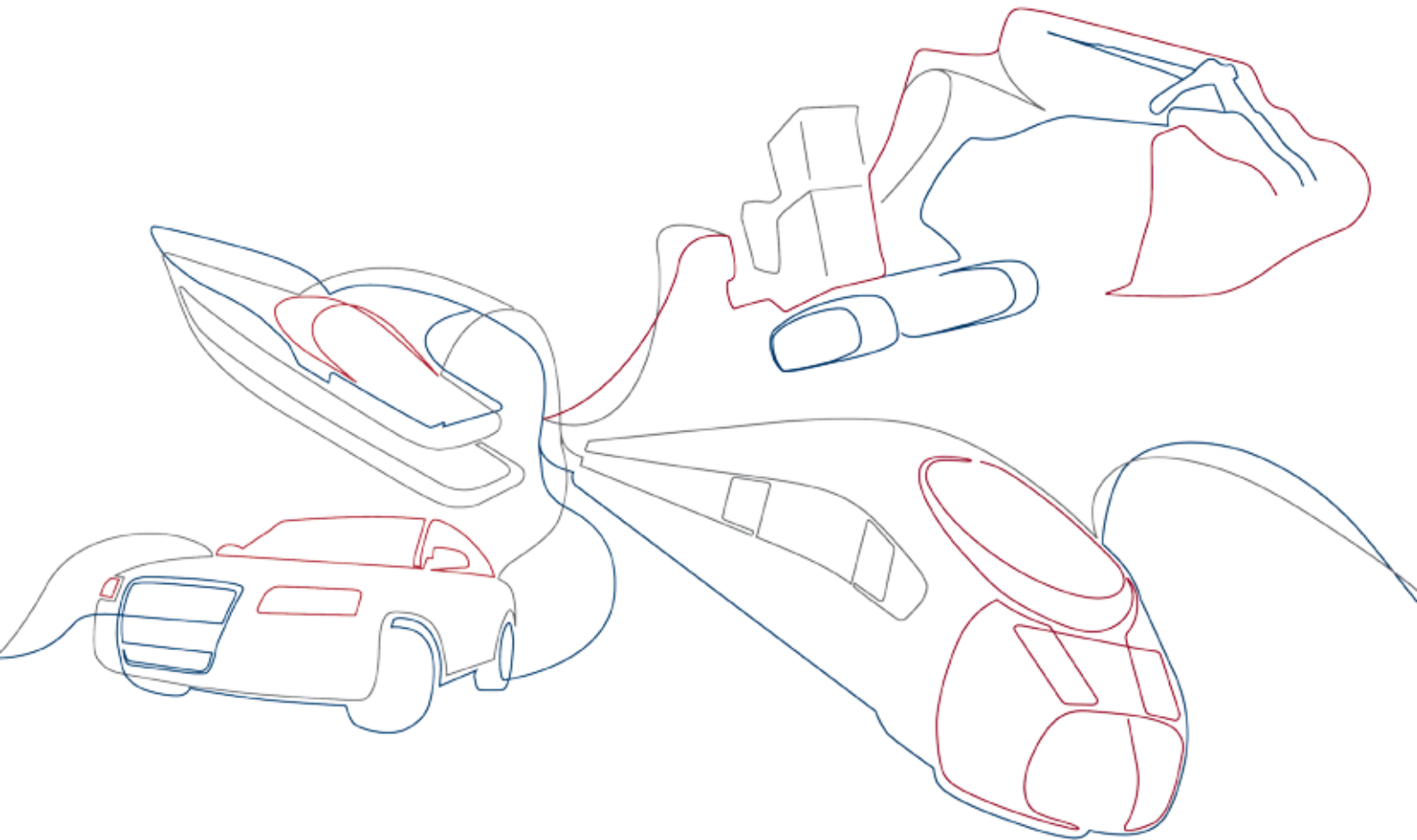


## Manual Connector HaKu 0-



## Manual Connector HaKu 0-



### Product Information

The manual connectors can be produced and used as control current and three-phase current couplings or in combination with both types of coupling. Due to their robust construction, our products offer a long service life with low maintenance.

The respective version is equipped individually according to the customer's wishes and requirements.

### Application areas

- Individual applications in rail, vehicle, mechanical engineering, agriculture and industry
- For stinger systems in the maintenance area
- For use as control current and three-phase current couplings
- For filling level monitoring
- Individual applications – depending on the application area, the products can be adapted to the customer's wishes

### Function

- Perfect current transmission, adapted to customer-specific application conditions
- Contacts and connection elements protected against dust and water even under rough environmental conditions
- Depending on the version, equipped with safety lock against unintended decoupling and disconnection
- Lockable cap for protection against misuse

Quality standards: We deliver this product according to our tested and certified quality standards.



**iso/ts 16949 incl. iso 9001**  
Quality management standard  
of the automotive industry



**din en 15085 c11**  
International welding  
permit for rail vehicles



**iris**  
Quality management standard  
of the railway industry

## Technical Data

The model to be selected depends on the respective customer requirements. The weights differ according to equipment. The weights stated here are average values. The tried and tested quality and

reliability of the manual connectors listed below are based on numerous patents which we use in the cooperation with our customers.

| Specification          | Description                                  | HaKu 0                | HaKu I                | HaKu 2                | HaKu 3                |
|------------------------|--|-----------------------|-----------------------|-----------------------|-----------------------|
| Standards              | Protective type (EN 60529)                   | IP54 (coupled)        | IP56* (coupled)       | IP54* (coupled)       | IP67* (coupled)       |
|                        | Layout of contactors according to EN 50124-1 | -                     | yes                   | yes                   | yes                   |
| Connection type        | Number of poles                              | 2 to 3                | 1 to 15               | 1 to 44               | 1 to 111              |
|                        | Contact connection                           | screwed               | crimp/screwed         | crimp/screwed         | crimp/screwed         |
| Electrical data        | Rated voltage                                | 42 V                  | 400 V                 | 1500 V                | 3000 V                |
|                        | Rated current                                | 10 A                  | 200 A                 | 500 A                 | 500 A                 |
| Mechanical properties  | Safety lock                                  | -                     | -                     | yes                   | yes                   |
| Application conditions | Temperature range                            | -30 °C ... +90 °C     | -30 °C ... +90 °C     | -30 °C ... +90 °C     | -30 °C ... +90 °C     |
| Materials              | Plug housing                                 | Cast aluminium        | Cast aluminium        | Cast aluminium        | Cast aluminium        |
|                        | Socket housing                               | Cast aluminium        | Cast aluminium        | Cast aluminium        | Cast aluminium        |
|                        | Contacts                                     | Copper or brass alloy | Copper or brass alloy | Copper or brass alloy | Copper or brass alloy |
| Weights                | Plug (without cable)                         | ca. 300 g             | ca. 1500 g            | ca. 2600 g            | ca. 7000 g            |
|                        | Connection socket                            | ca. 700 g             | ca. 2000 g            | ca. 3300 g            | ca. 5700 g            |

\* higher protection levels are available on request

## Manual connector HaKu 0

### Product information

The 2 or 3-pole connector is used for filling level monitoring, e.g. for diesel-powered vehicles or diesel locomotives or for locomotive lighting.

Socket and plug can be equipped with pin or bush contacts depending on the application case. Individual colouring is available on request.



## Manual Connector HaKu I

### Product information

The manual connector size 1 can be used as a control current and three-phase current coupling. The plug is arrested by means of the socket cap.

These manual connectors can be supplied, for example as follows:

- 15 control current contacts (25 A, 110 V)
- 2 three-phase current contacts (200 A, 400 V)

This model can be equipped individually according to the customer's wishes and requirements. Individual colouring is available on request.



## Manual Connector HaKu

### Product information

This model can be used as a control current and/or three-phase current coupling. A safety lock provides protection against unintended disconnection of the plug. Depending on the requirements, 1 to 44 contacts can be integrated. For example, 3 three-phase current contacts (200 A, 380 V) or 2 three-phase current contacts (100 A, 200 V) and a further 9 control contacts in combination.

This model can be equipped individually according to the customer's wishes and requirements. Individual colouring is available on request.



## Manual Connector HaKu 3

### Product information

This model was developed for particularly high currents or a large number of control lines. The plug is arrested in the socket by means of a coupling clip. A safety lock provides protection against unintended disconnection of the plug. It can be equipped with up to 111 contacts. For example as an alternating current coupling with 5 contacts (500 A, AC440 V) and a further 8 control contacts (25 A, DC72 V).

This model can be equipped individually according to the customer's wishes and requirements. Individual colouring is available on request.





## **our Plus for you:**

- On-time deliveries
- Consistently high quality worldwide
- All-round service worldwide
- Know-how built up over many years for your product
- International presence
- Engineering service on site – from the prototype to after-sales
- Original manufacturer
- A team just for you

[www.aichele-up.com](http://www.aichele-up.com)  
[www.bremi.de](http://www.bremi.de)  
[www.era-contact.de](http://www.era-contact.de)  
[www.streicherplast.de](http://www.streicherplast.de)

### **For the following countries:**

Finland, Sweden, Norway,  
Denmark, Argentina, Brazil,  
Chile, Mexico, Peru, South  
Africa, Israel, and Australia  
contact Amaronia Ltd.  
+358 40 128 0817  
+358 40 128 0917  
[contact@amaronia.com](mailto:contact@amaronia.com)  
[www.amaronia.com](http://www.amaronia.com)

era-contact GmbH Germany  
Gewerbestrasse 44  
75015 Bretten-Gölshausen  
Deutschland / Germany  
Phone +49 (0)72 52 - 971 0  
[info.germany@era-contact.de](mailto:info.germany@era-contact.de)

era-contact Tunisia S.A.R.L.  
Hriza 7026 El Azib, Bizerte  
Tunesien / Tunisia  
Phone +216 (0)72 - 45 1010  
[info.tunisia@era-contact.de](mailto:info.tunisia@era-contact.de)

era-contact (Suzhou) Co., Ltd.  
Building 21  
Gang Tian Road  
(Gang Tian Industry Park)  
215126 Suzhou, P.R. China  
Phone +86 (0)5 12 - 6299 1800  
[info.china@era-ct.com](mailto:info.china@era-ct.com)

era-contact Turkey  
Demiryolu Sistemleri San.  
ve Tic. Ltd. Sti.  
Cerkesli OSB Mahallesi,  
Imes-9 Caddesi, No:31,  
41455 Dilovasi, Kocaeli  
Türkei / Turkey  
Phone +90 (0) 532 504 38 09  
[info.turkey@era-contact.com.tr](mailto:info.turkey@era-contact.com.tr)

era-contact USA, LLC  
55 Cabot Court, Ste. B  
Hauppauge, NY 11788, USA  
Phone +1 (0)631 524-5530x0  
[info.usa@era-contact.com](mailto:info.usa@era-contact.com)